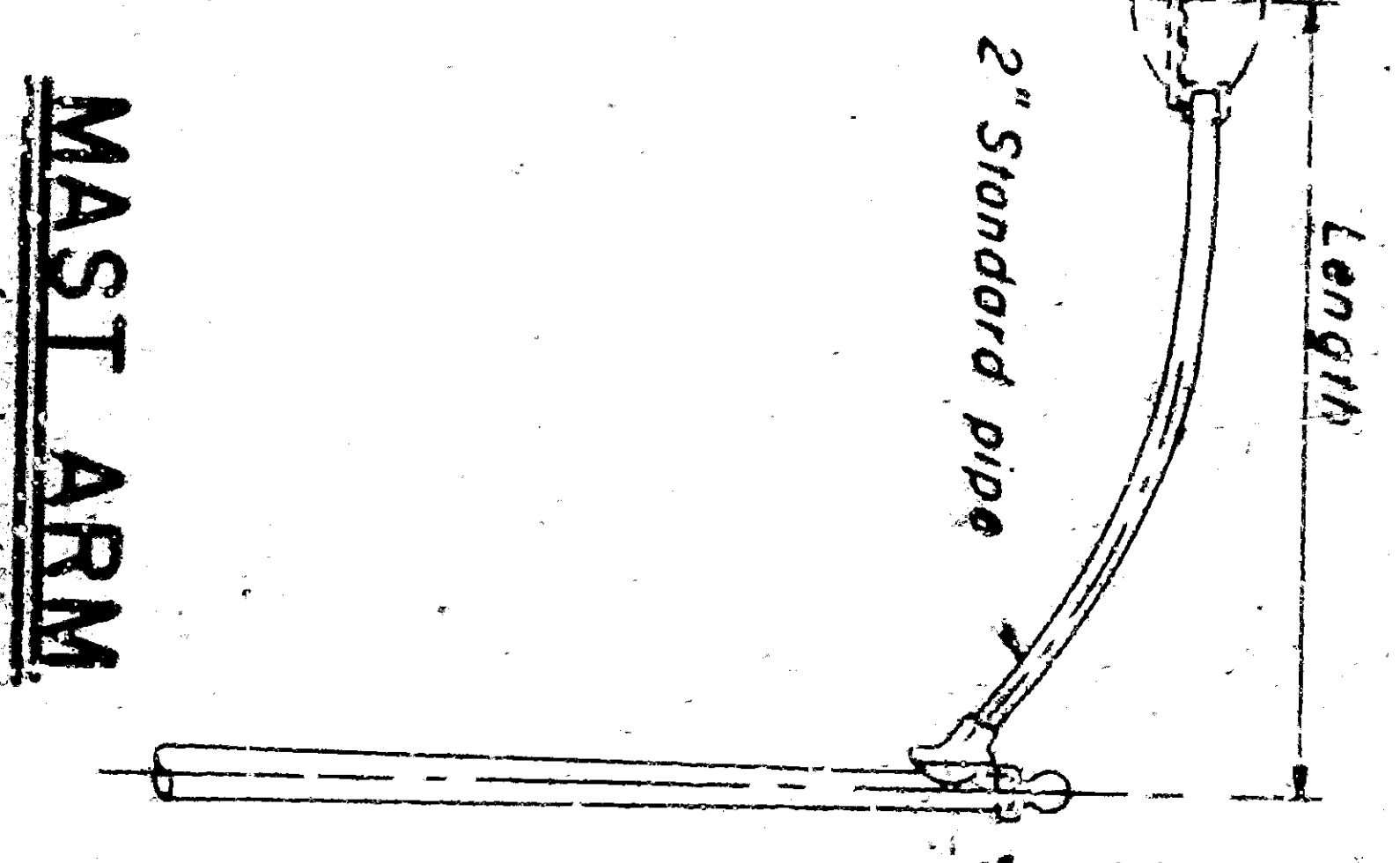


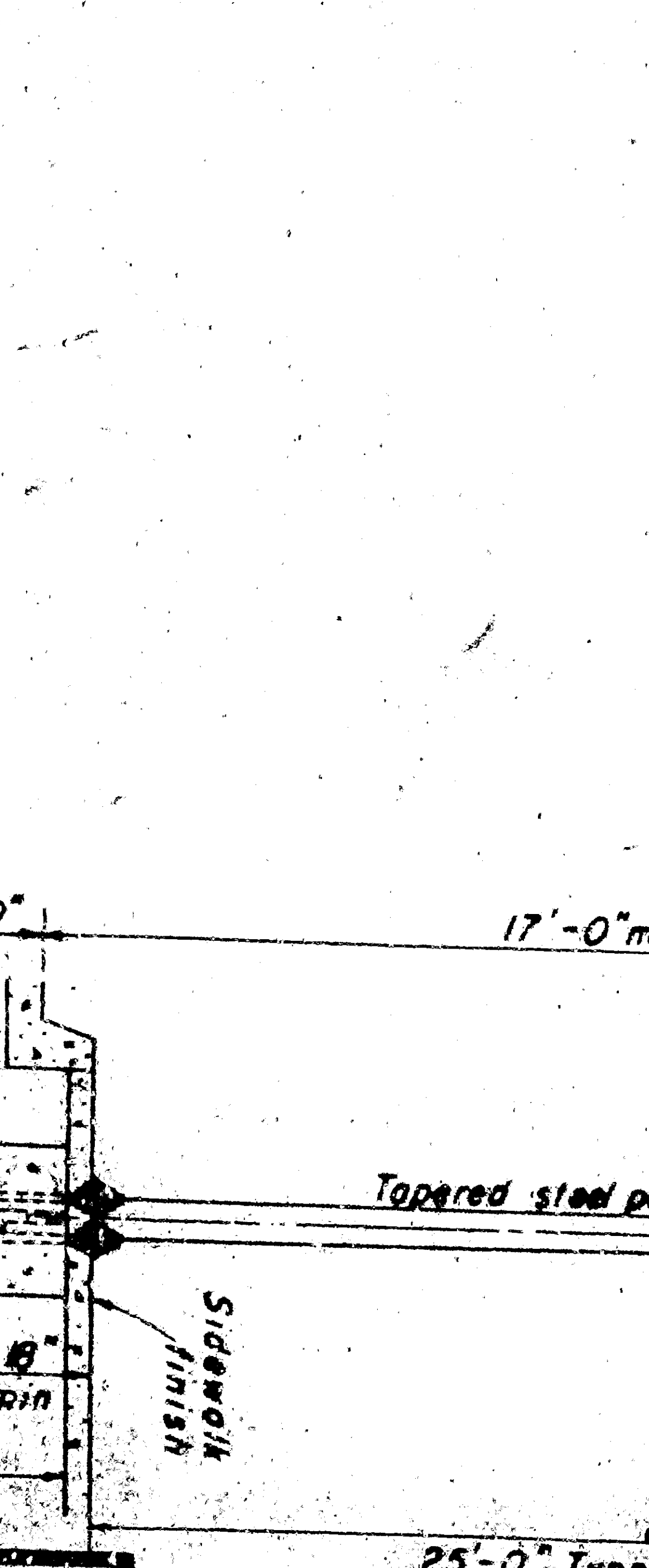
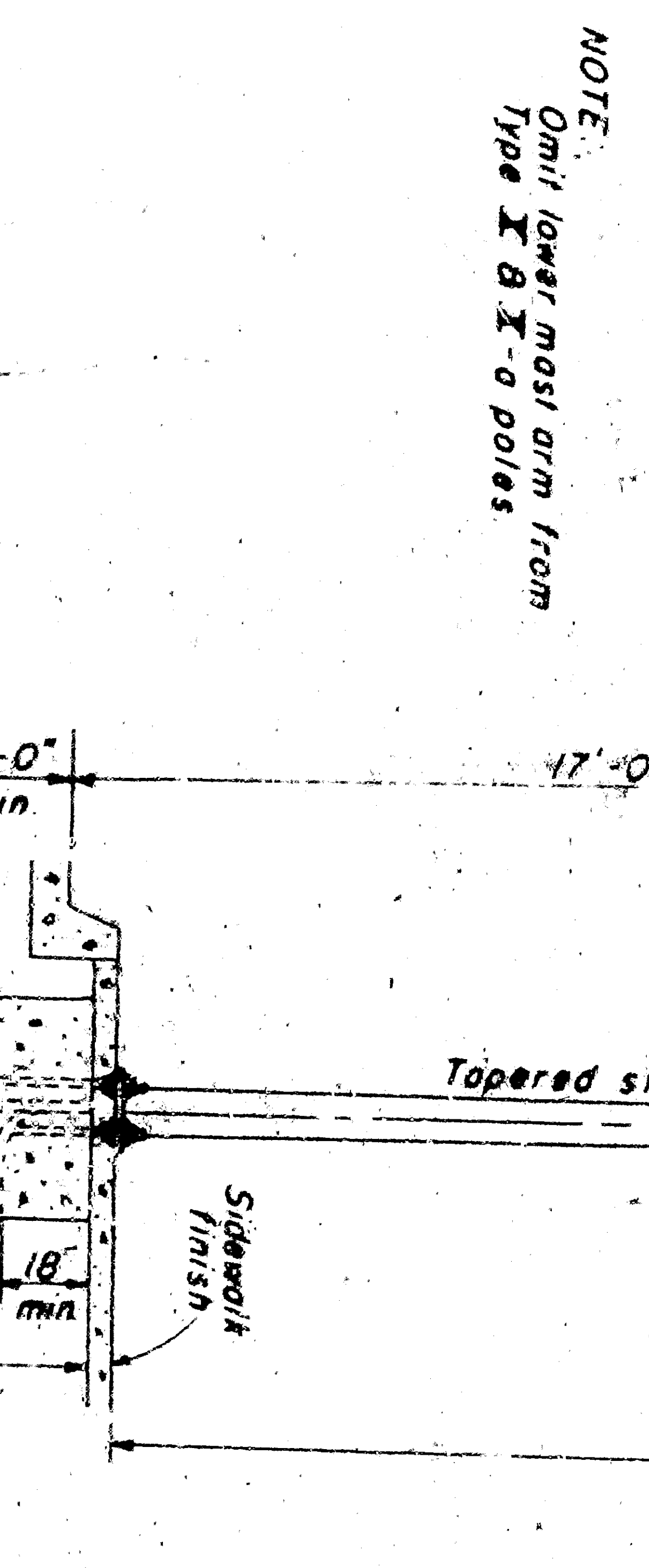
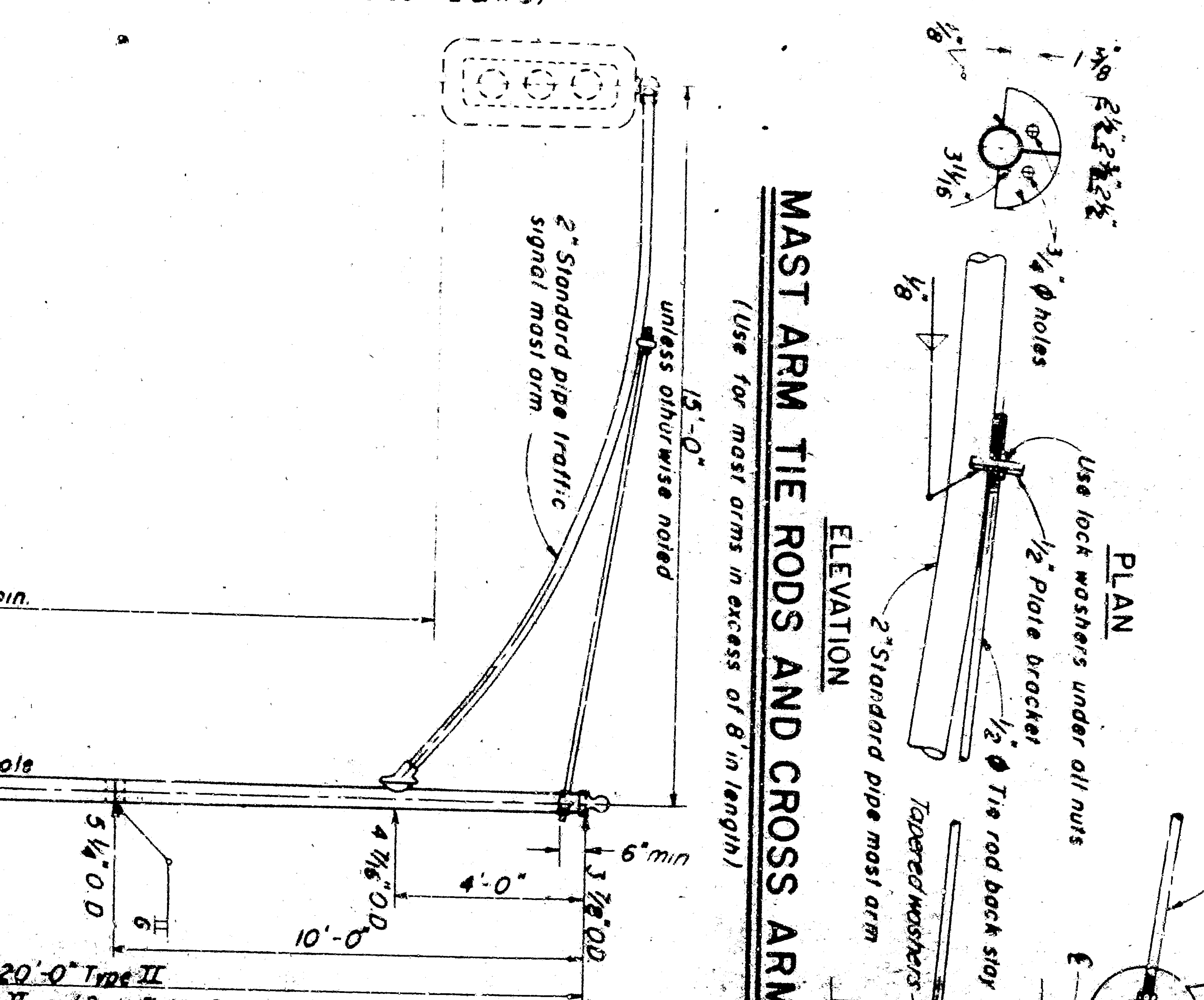
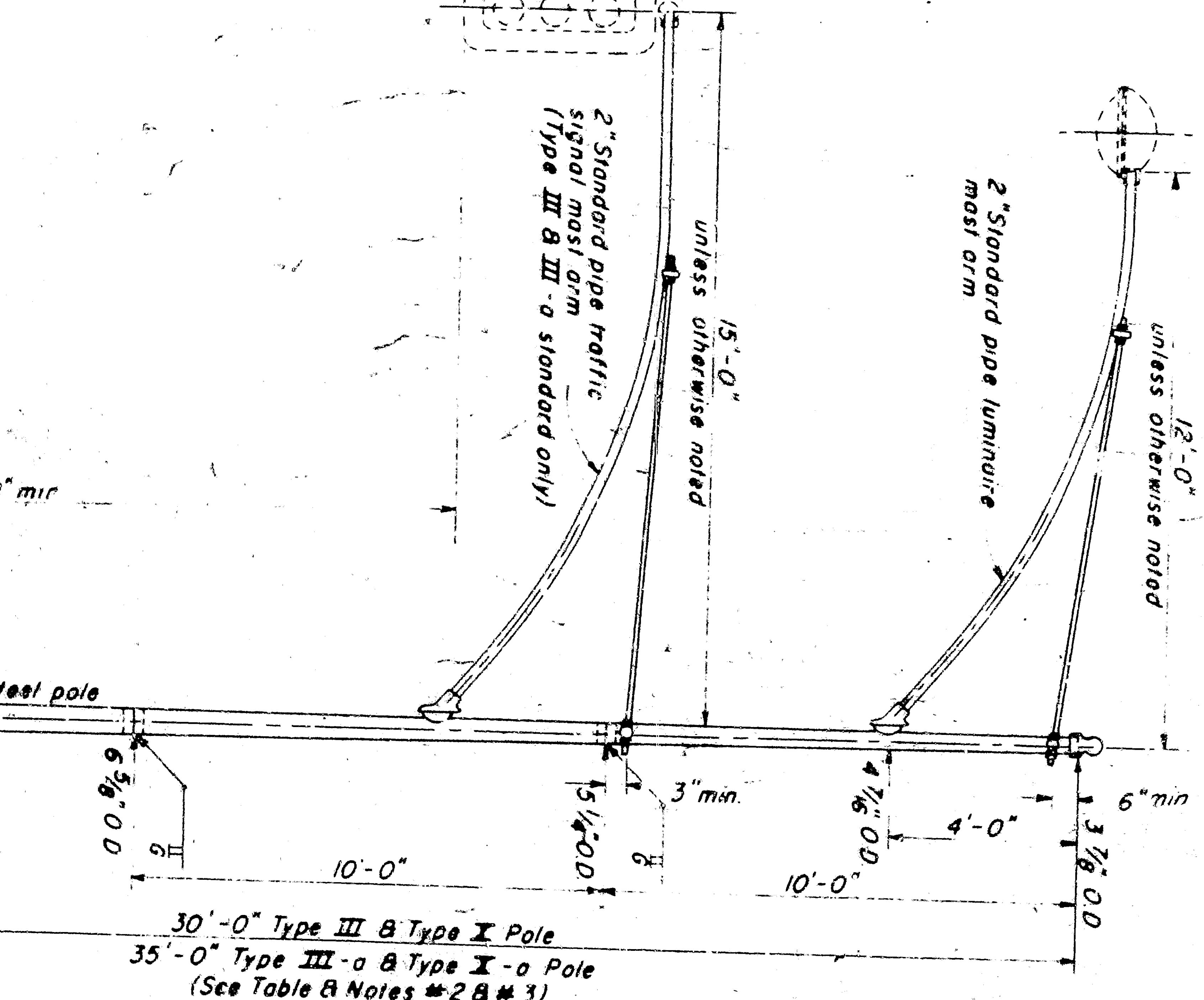
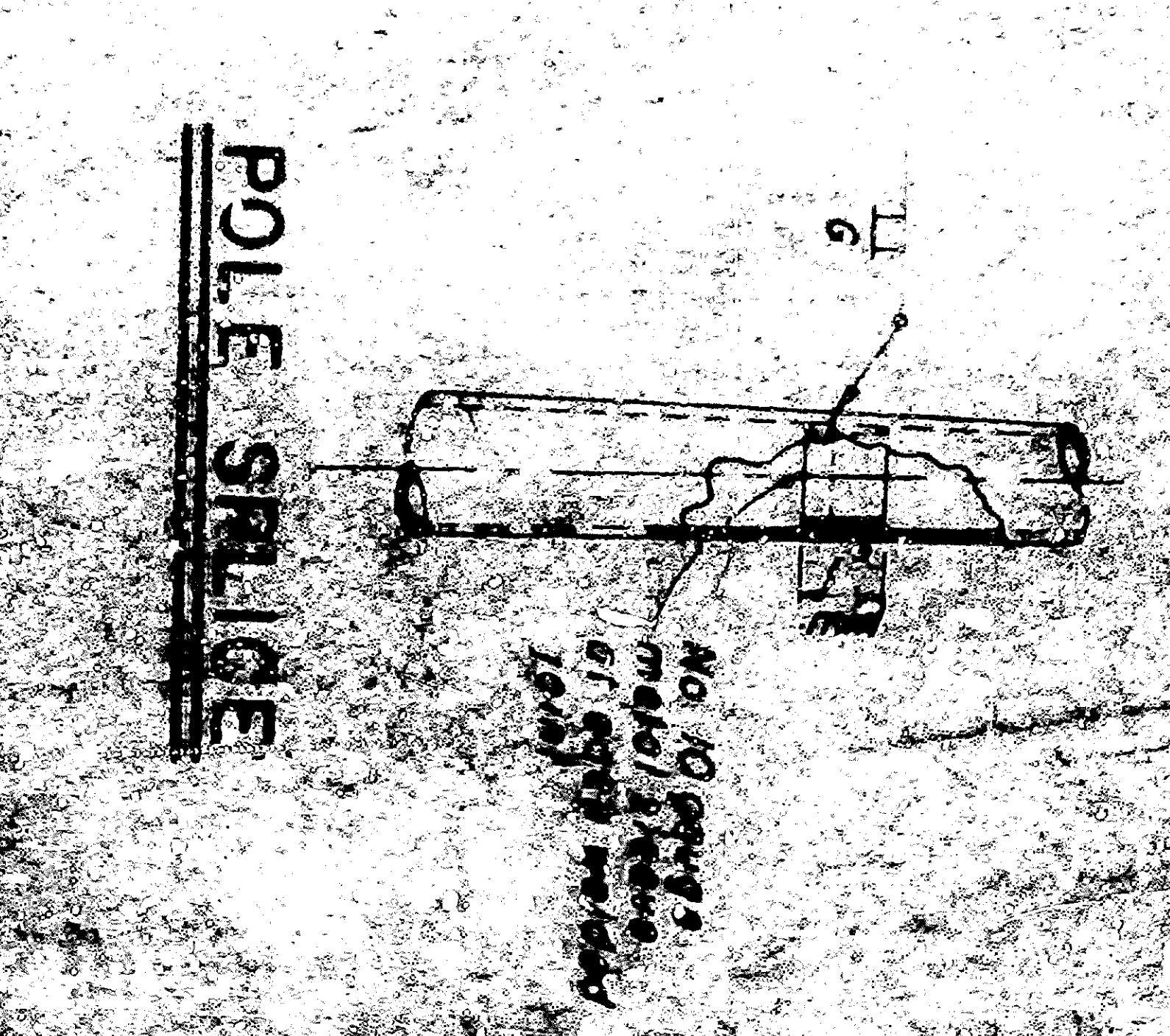
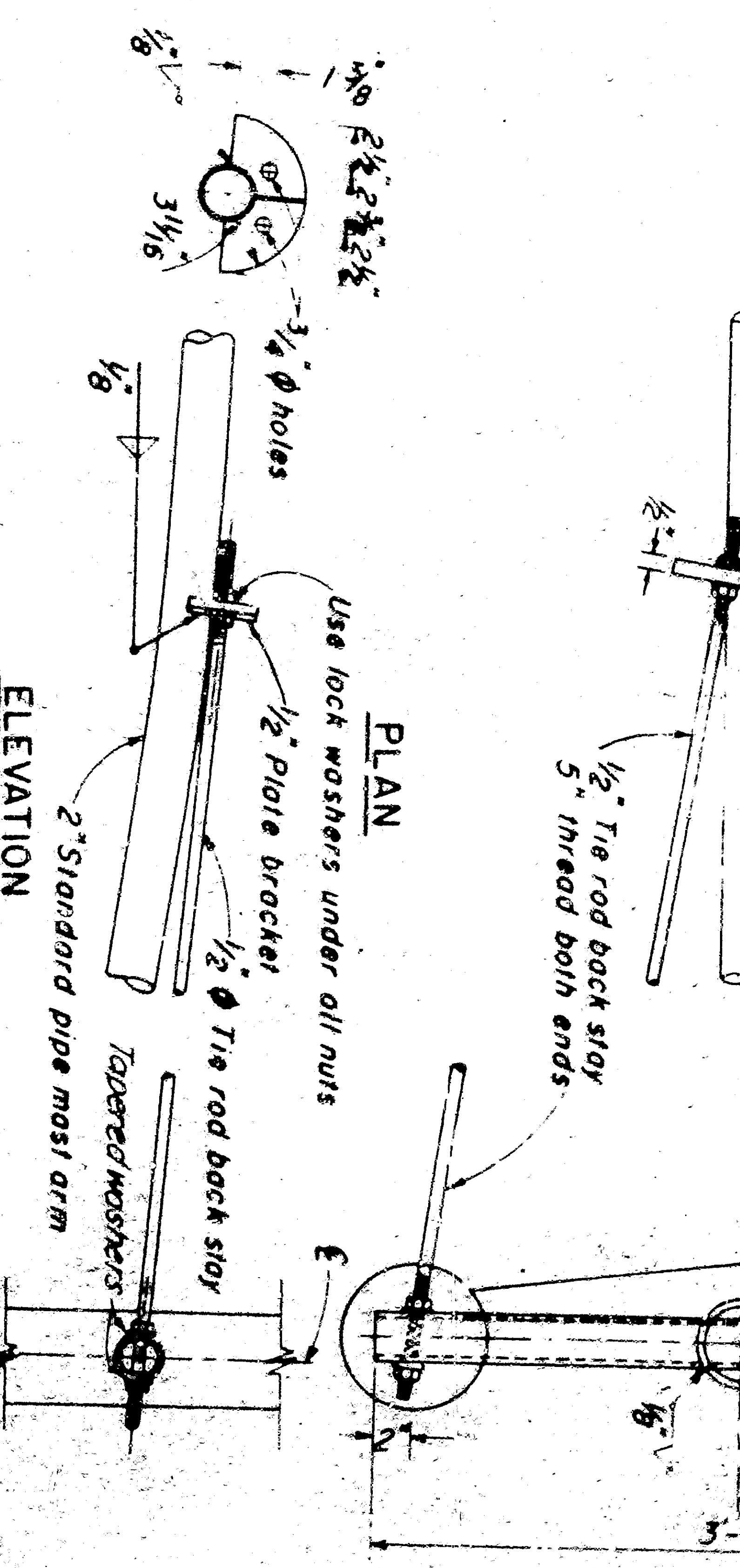
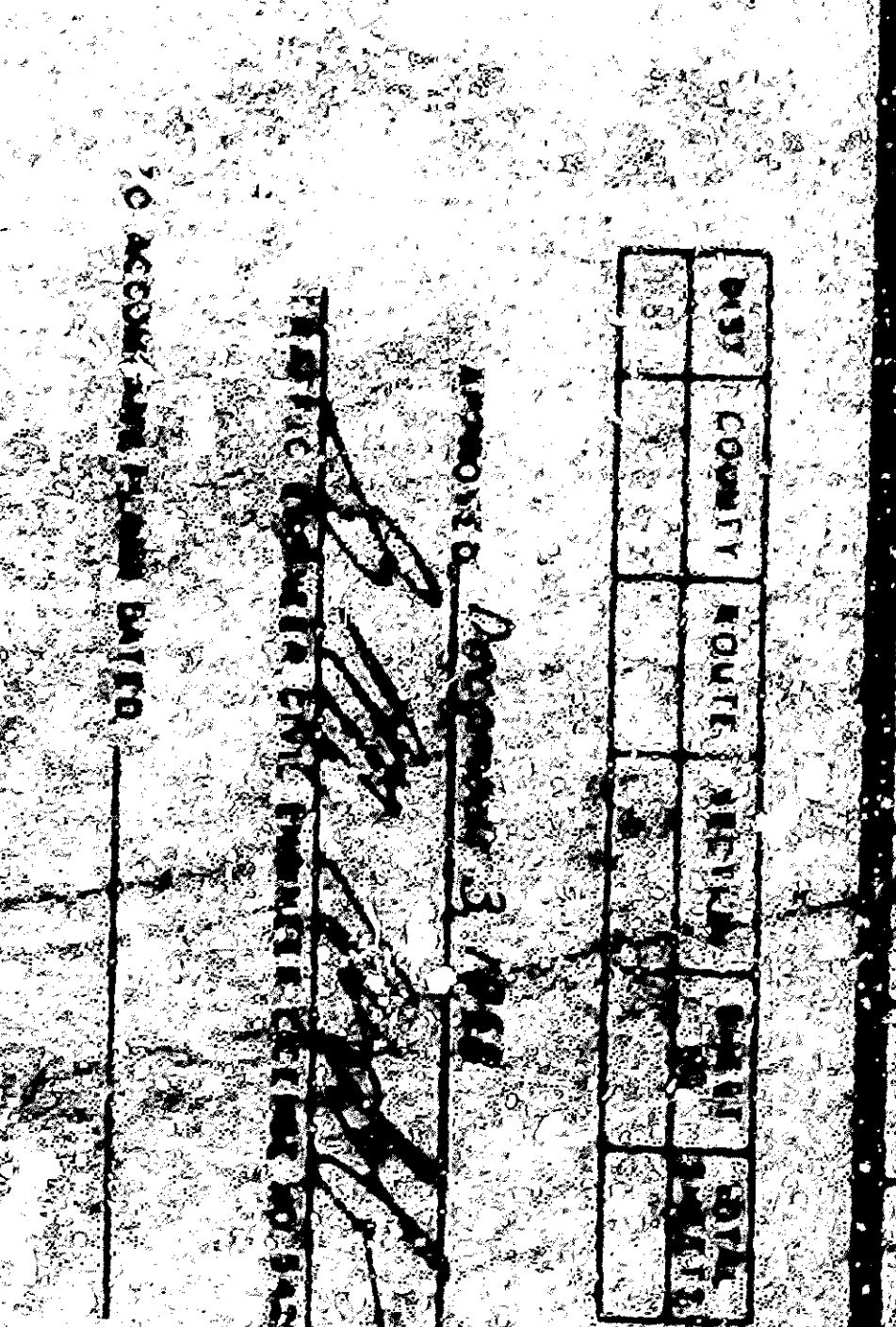
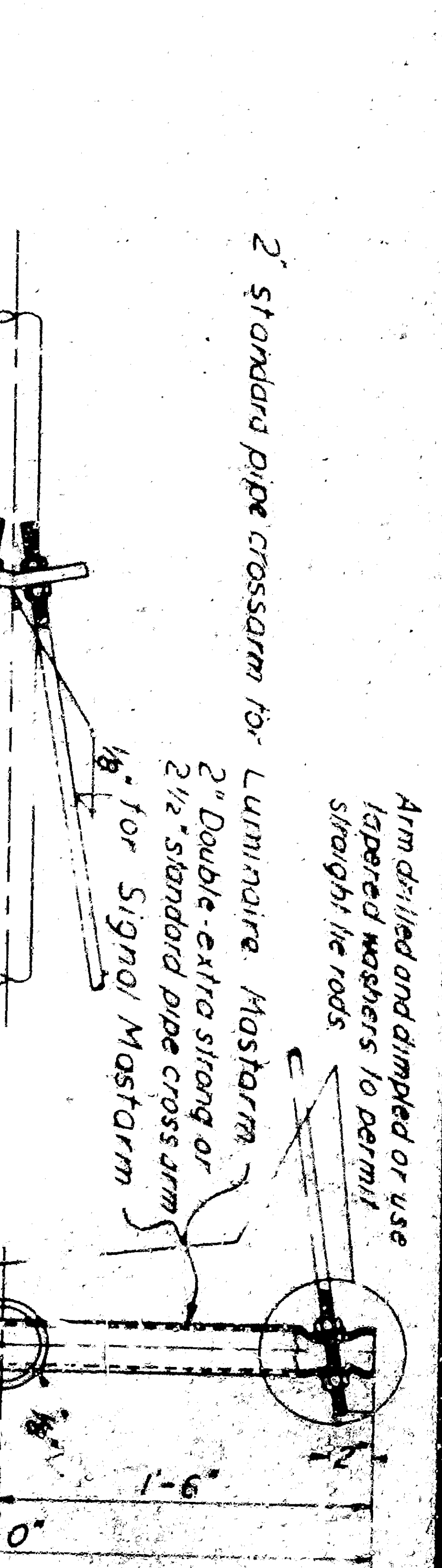
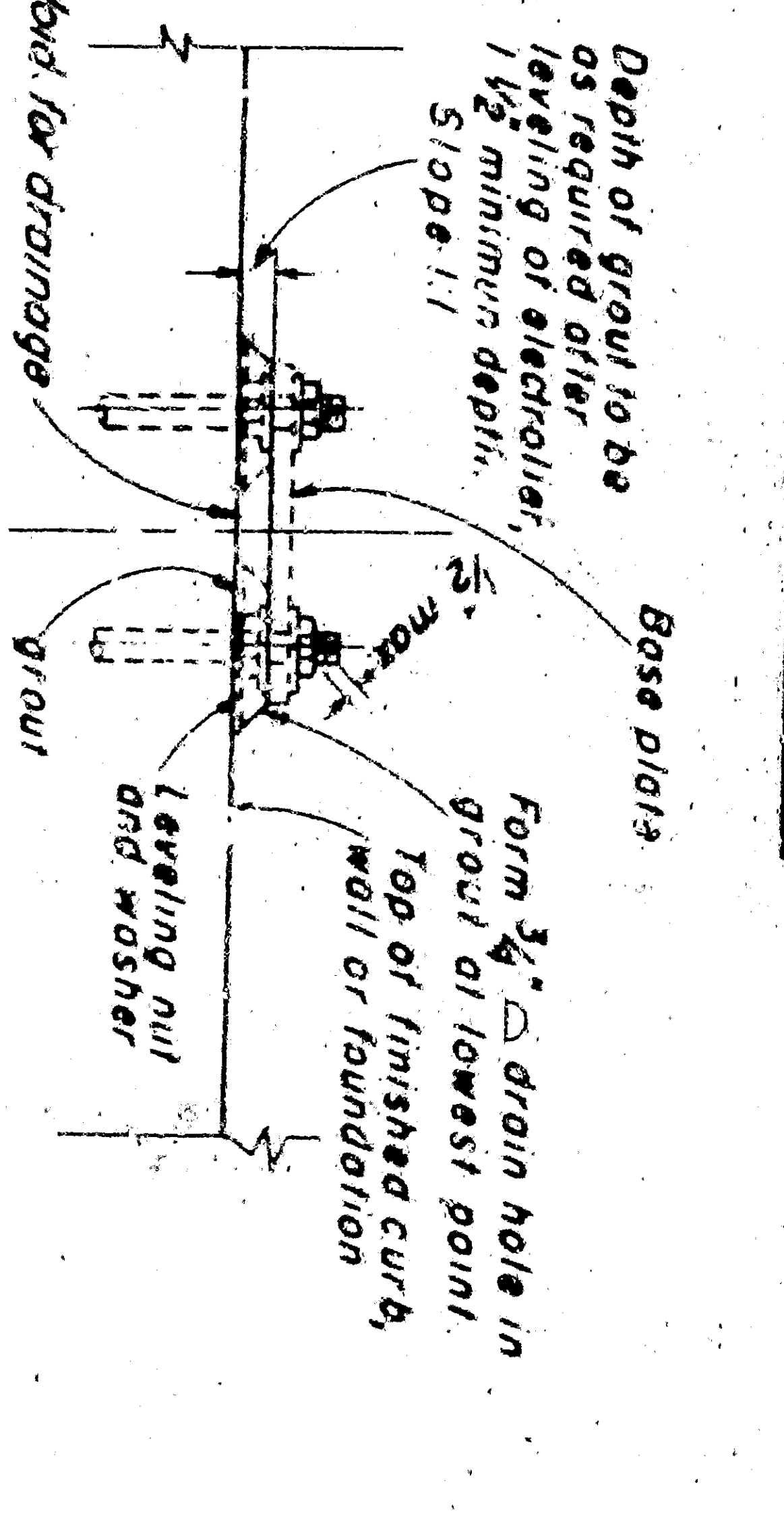
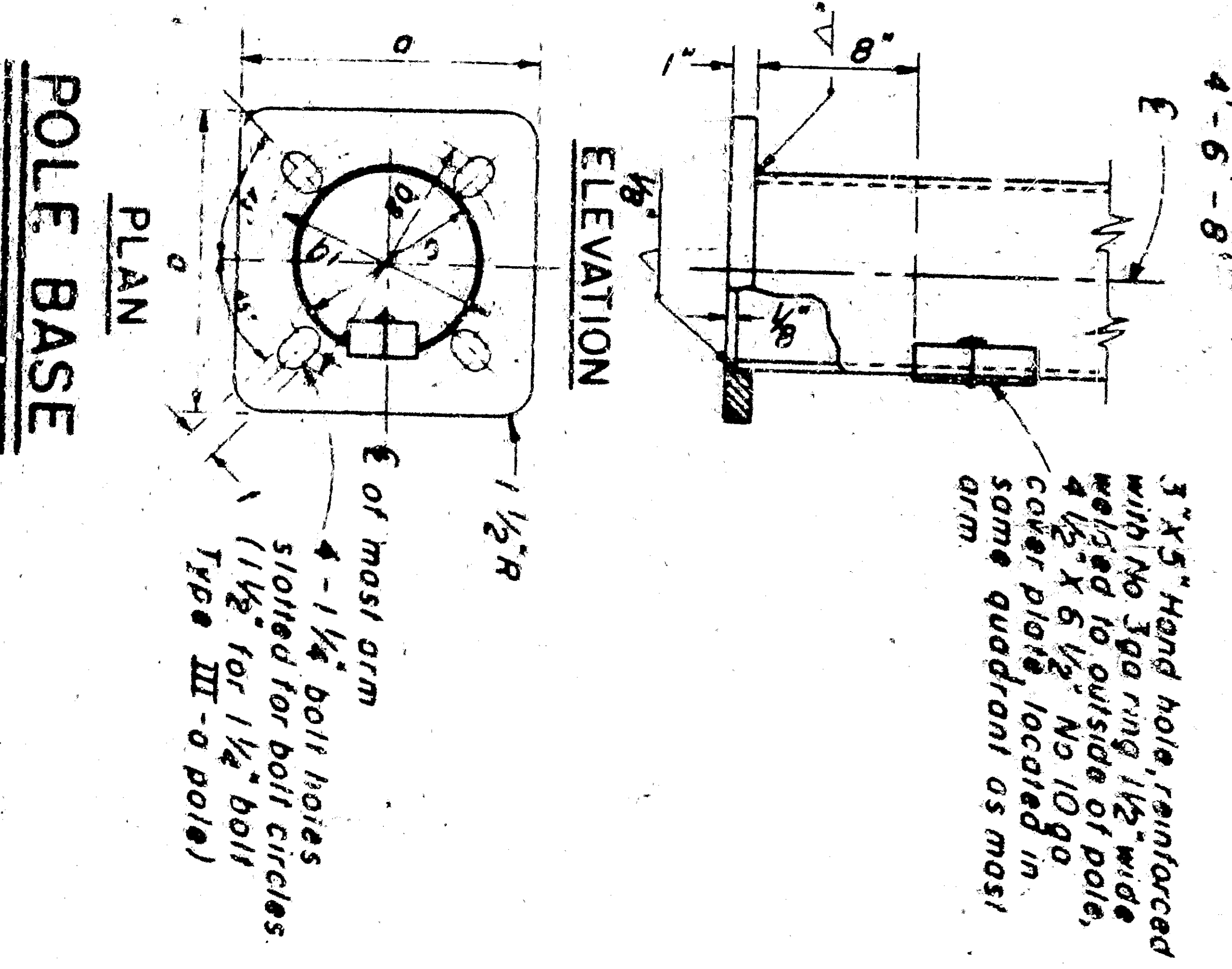
BASE AND ANCHOR BOLT SCHEDULE

| POLE TYPE | POLE HEIGHT & GAUGE | POLE BASE DIAMETER | BASE PLATE DIMENSIONS | BASE PL. SLOT SIZE | ANCHOR BOLT DIMENSIONS | BOLT SCHEDULE |
|-----------|---------------------|--------------------|-----------------------|--------------------|------------------------|---------------|
| II-a | 20 X 10 ga. | 6 3/8" | 11 1/2" X 11 1/2" | 1 1/4" | 1 X 36" | 5/16" |
| II-a | 25 X 10 ga. | 7 3/8" | 11 1/2" X 11 1/2" | 1 1/4" | 1 X 36" | 5/16" |
| II-a | 30 X 7 ga. | 8" | 11 1/2" X 11 1/2" | 1 1/4" | 1 1/2 X 40" | 1/2" |
| II-a | 35 X 7 ga. | 8 1/2" | 11 1/2" X 11 1/2" | 1 1/4" | 1 1/2 X 40" | 1/2" |
| II-a | 30 X 10 ga. | 8 1/2" | 11 1/2" X 11 1/2" | 1 1/4" | 1 1/2 X 40" | 1/2" |
| II-a | 35 X 10 ga. | 9 1/2" | 11 1/2" X 11 1/2" | 1 1/4" | 1 1/2 X 40" | 1/2" |
| II-a | 35 X 10 ga. | 10 1/2" | 11 1/2" X 11 1/2" | 1 1/4" | 1 1/2 X 40" | 1/2" |

Note: If gauge acceptable if fabricated from steel yield of 40,000 psi minimum yield.



3 X 3 1/2 Hand hole, reinforced with 1/2 inch ring, 1/2 inch wide, 4 1/2 X 6 1/2 No. 10 galv. coat plate, located in some quadrants as mast arm.



GENERAL AND INSTALLATION NOTES

1. Luminaires must be installed in accordance with the manufacturer's instructions.
2. The lower 5' length of a 30' Type III-a pole consists of a 25' length of a 30' Type III-a pole and a 5' length of a 30' Type III-a pole.
3. The lower 5' length of a 35' Type III-a pole consists of a 30' length of a 35' Type III-a pole and a 5' length of a 35' Type III-a pole.
4. The lower 5' length of a 40' Type III-a pole consists of a 35' length of a 40' Type III-a pole and a 5' length of a 40' Type III-a pole.

ANCHOR BOLTS

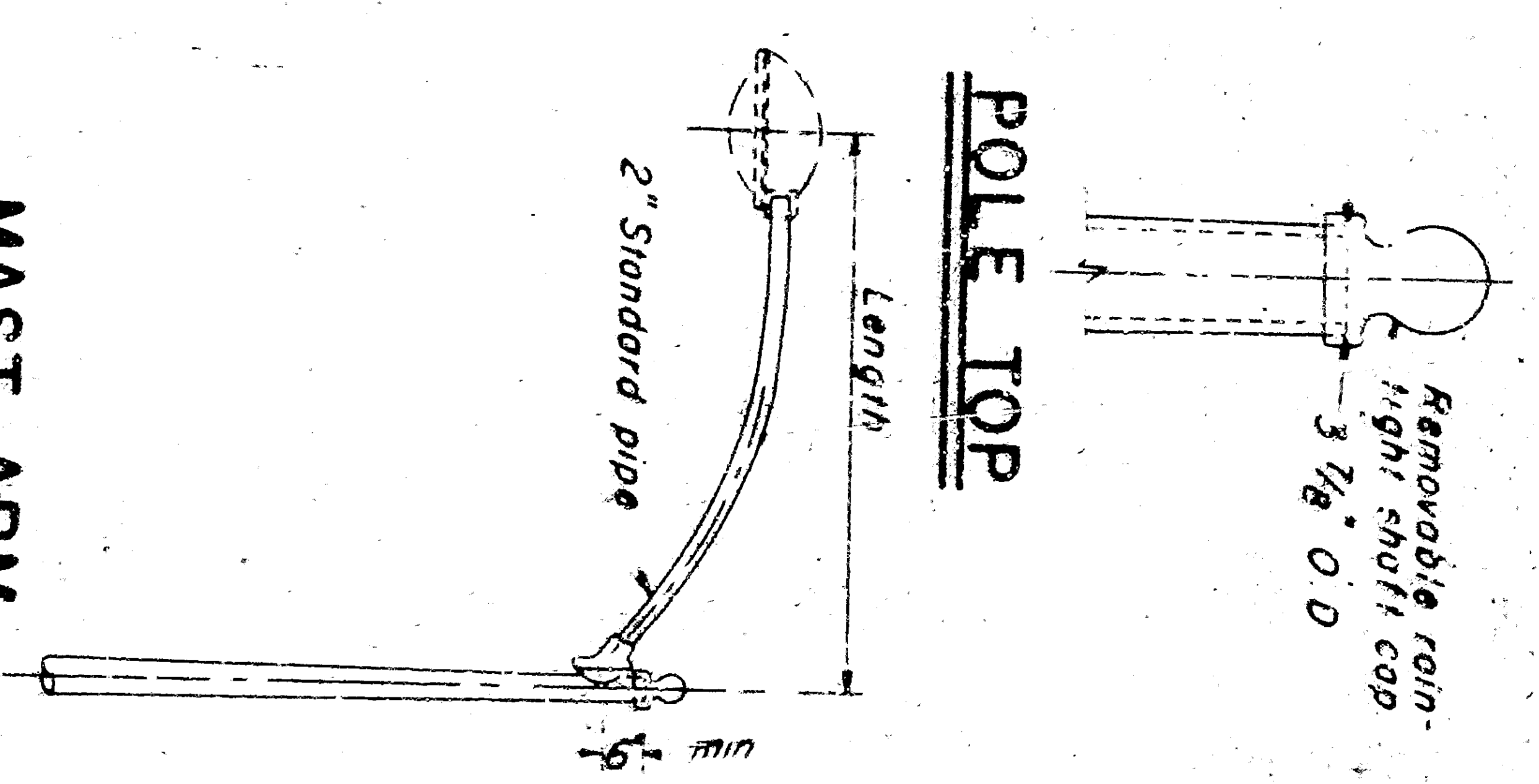
1. Each single-rod shall be supplied with 2 nuts and 2 washers.
2. Each double-rod shall be supplied with 4 nuts and 4 washers.
3. Washers shall be 5/16" X 1 1/2" X 3/16".
4. The nuts shall be 5/16" X 1 1/2" X 3/16".
5. The rods shall be 1/2" diameter.
6. The rods shall be galvanized.
7. The rods shall be 5' long.
8. The rods shall be 1/2" diameter.
9. The rods shall be galvanized.
10. The rods shall be 5' long.

STANDARD CALIF. TYPE STANDBY DEPARTMENT OF HIGHWAYS DIVISION OF HIGHWAYS

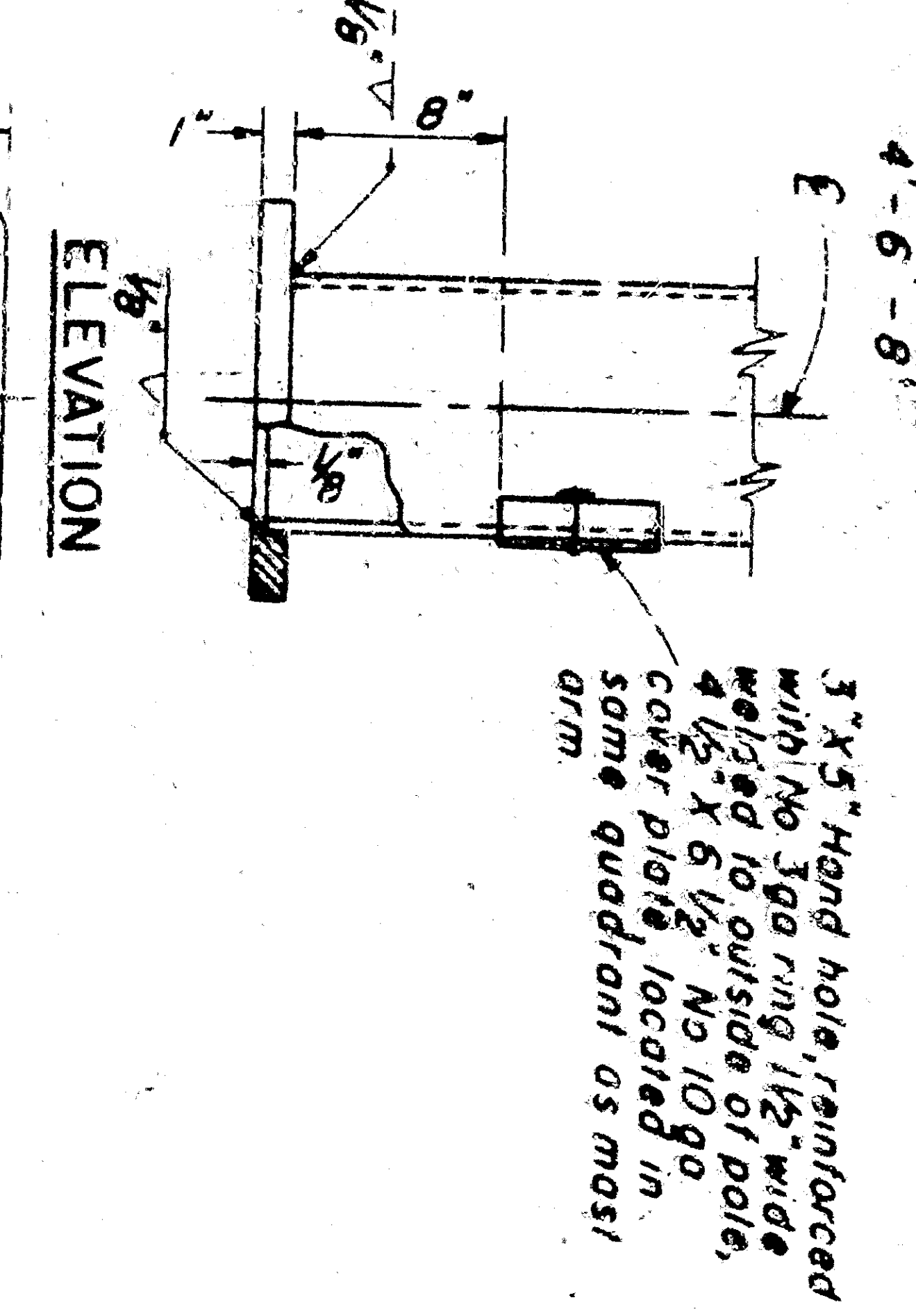
| POLE TYPE | POLE HEIGHT & GAUGE | POLE BASE DIAMETER | BASE PLATE DIMENSIONS | BASE PL SLOT SIZE | ANCHOR BOLT DIMENSIONS | ANCHOR BOLT DIAMETER |
|-----------|---------------------|--------------------|-----------------------|-------------------|------------------------|----------------------|
| II-c | 20 x 10 ga | 6 1/2" | 6" x 12" | 1 1/2" x 1 1/2" | 1" x 36" | 5/8" |
| II-a | 25 x 10 ga | 7 3/8" | 11 1/2" x 12" | 1 1/2" x 1 1/2" | 1" x 36" | 5/8" |
| III-a | 30 x 7 ga | 8" | 11 1/2" x 12" | 1 1/2" x 1 1/2" | 1 1/4" x 40" | 1" |
| III-b | 35 x 7 ga | 8 1/2" | 13 1/2" x 12" | 1 1/2" x 1 1/2" | 1 1/4" x 40" | 1 1/2" |
| I-a | 30 x 10 ga | 8 1/2" | 11 1/2" x 12" | 1 1/2" x 1 1/2" | 1 1/4" x 36" | 1 1/2" |
| I-b | 35 x 10 ga | 8 1/2" | 13 1/2" x 12" | 1 1/2" x 1 1/2" | 1 1/4" x 36" | 1 1/2" |

Note: If gauge acceptable if fabricated from steel.

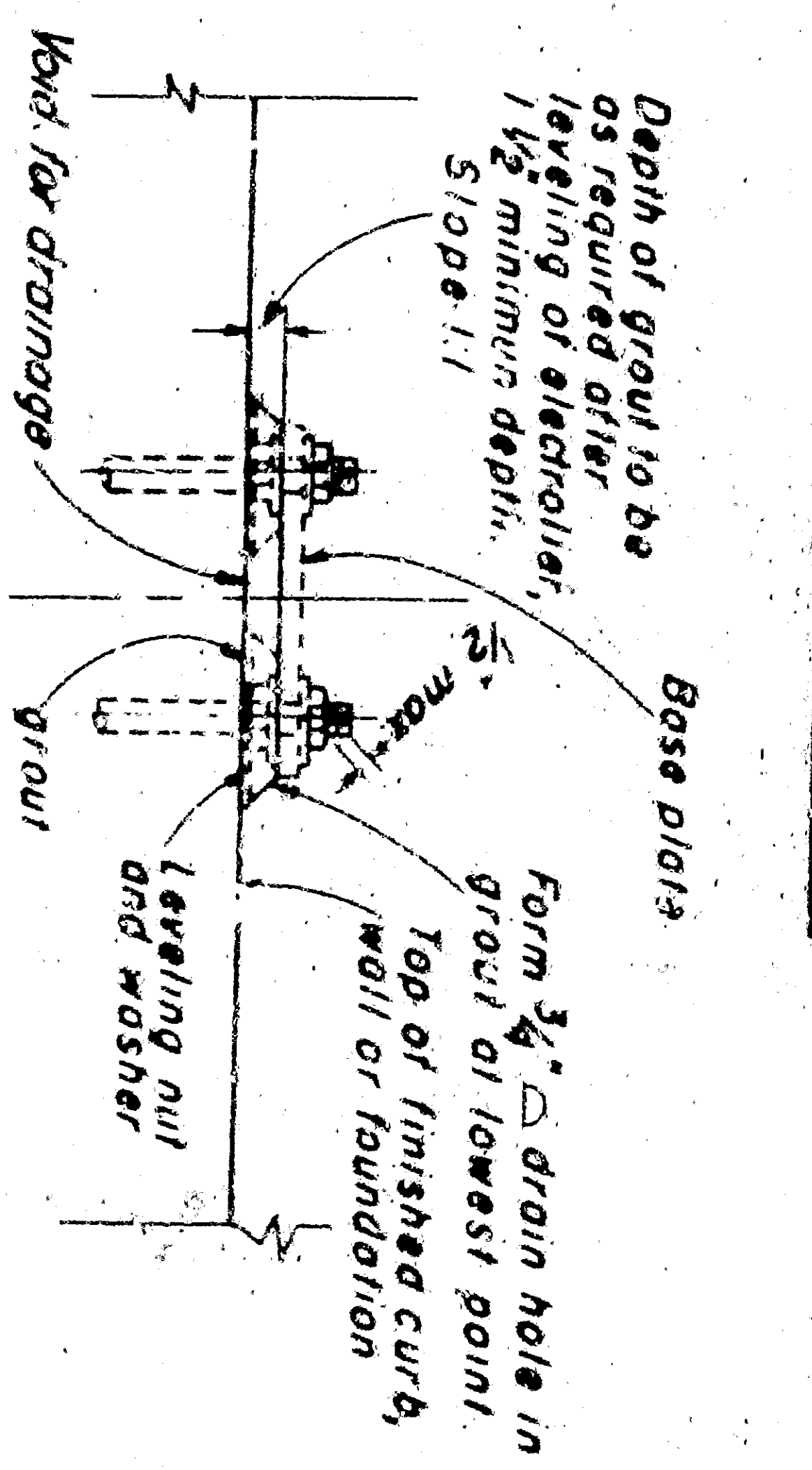
BASE AND ANCHOR BOLT SCHEDULE



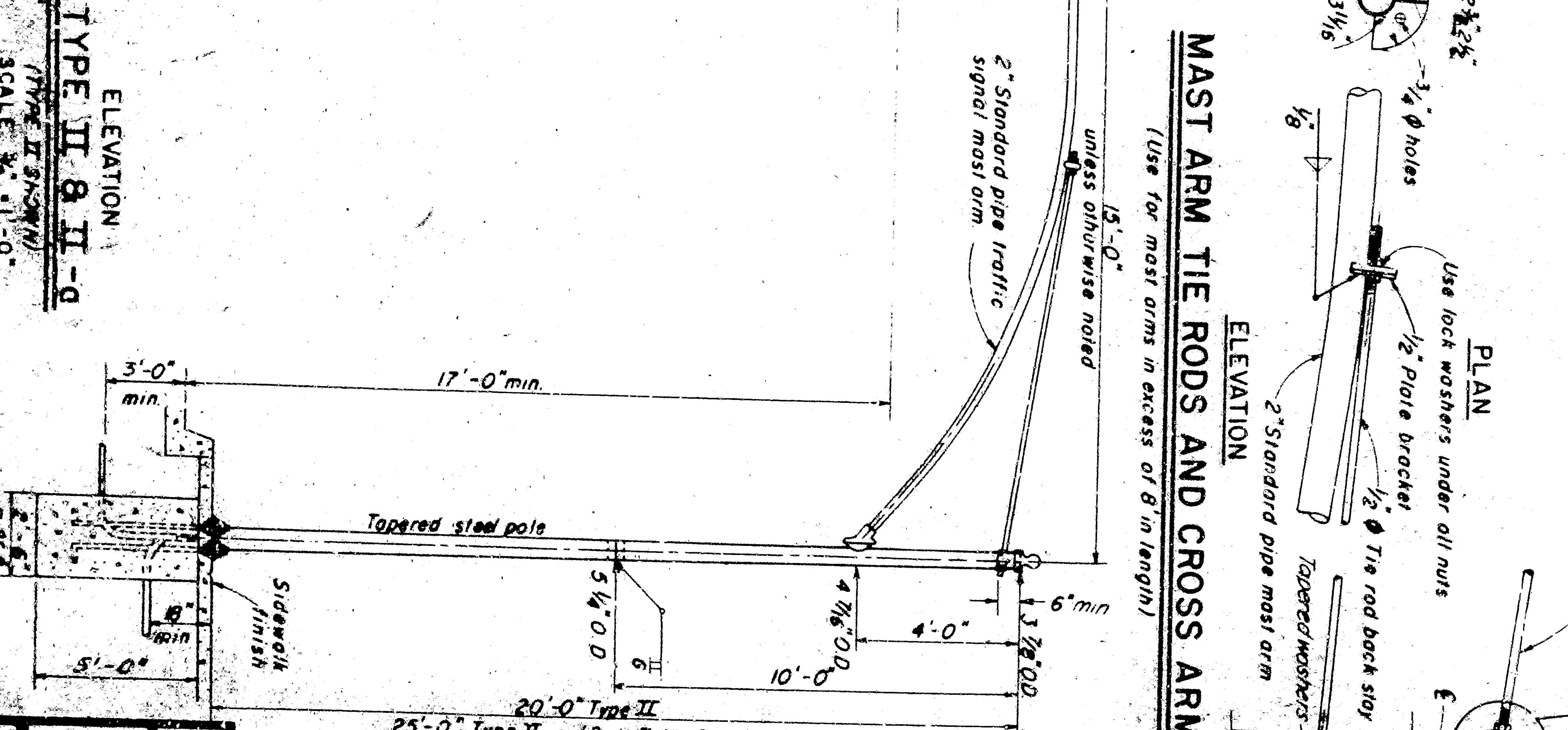
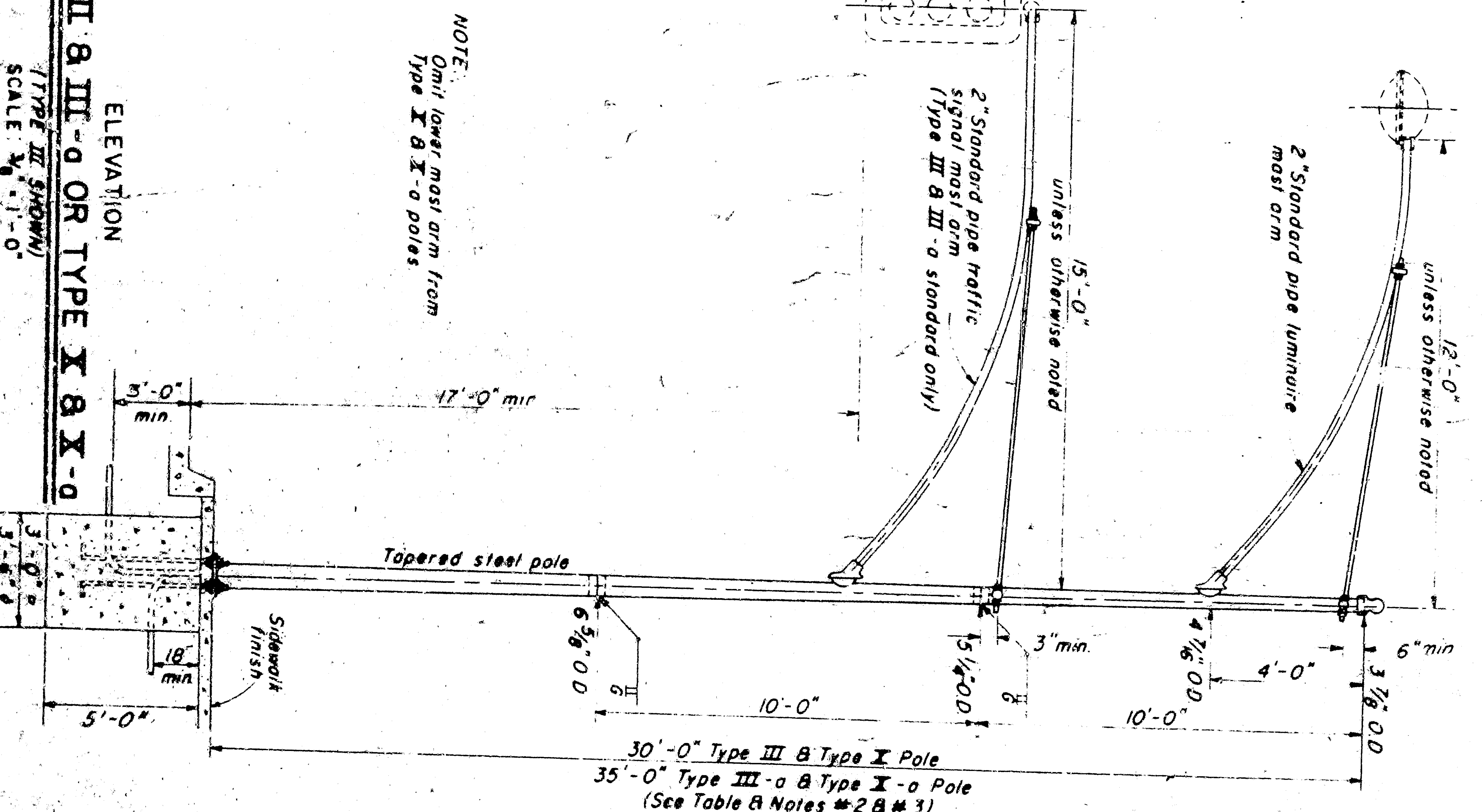
MAST ARM



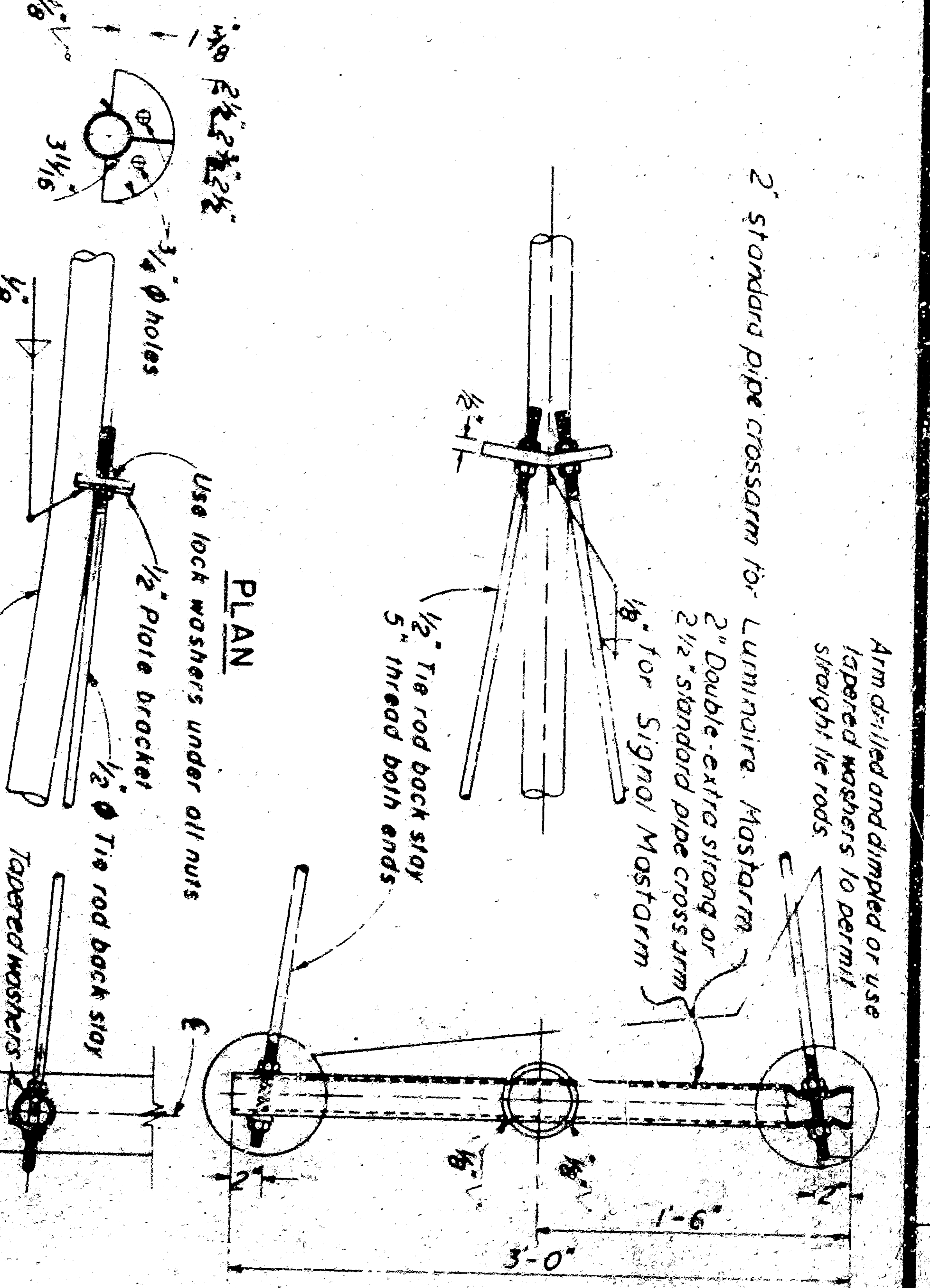
POLE BASE



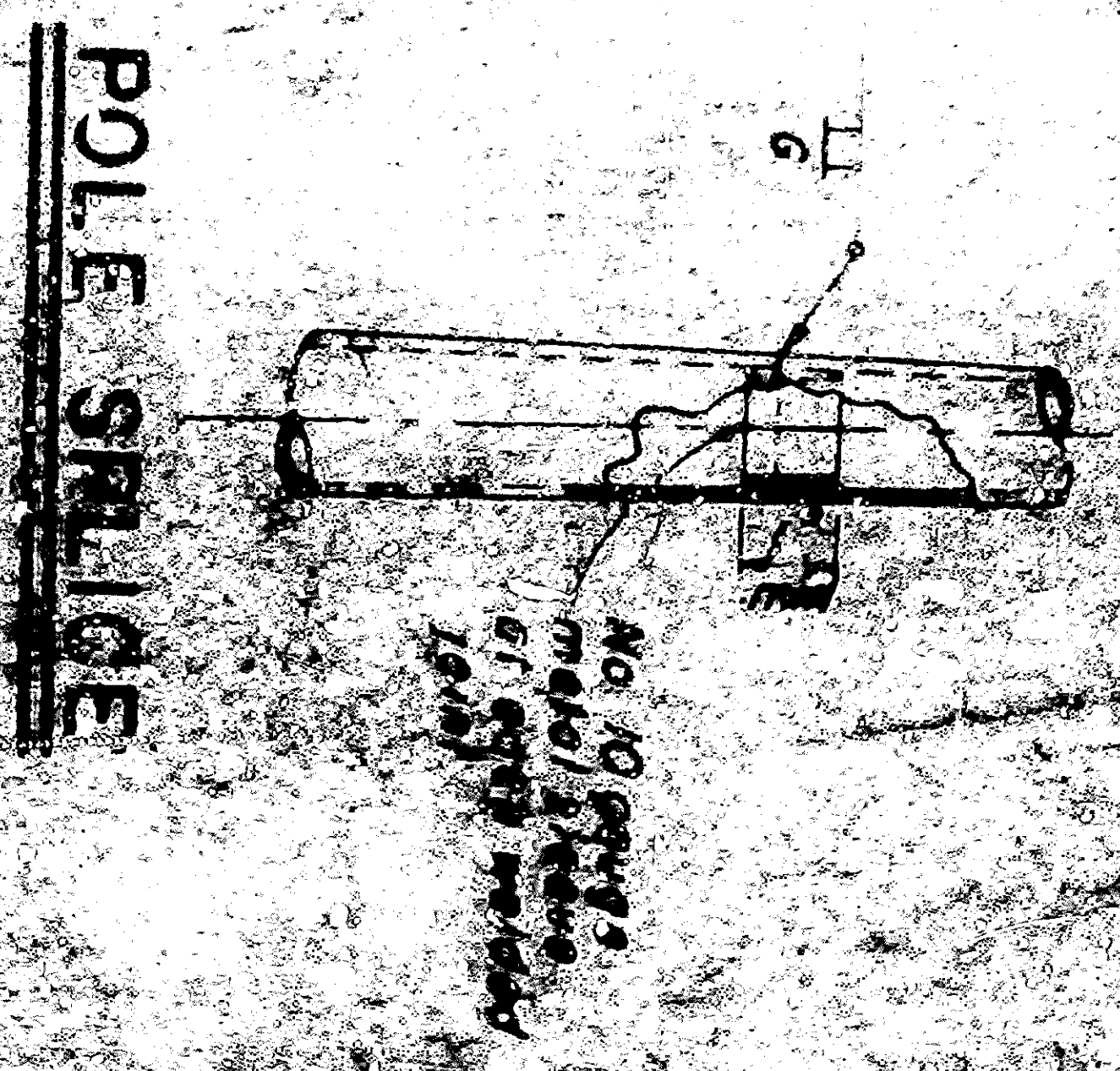
GROUT DETAIL



MAST ARM TIE RODS AND CROSS ARM



CALIF - TYPE STANDA



GENERAL AND INSTALLATION NOTES

1. Luminaires must be installed in accordance with the manufacturer's instructions and specifications.
2. The lower 5' length of a 30' pole must consist of a 30' Type II-a pole.
3. The lower 5' length of a 35' pole must consist of a 30' Type II-a pole and a 5' Type II-a pole.
4. The lower 5' length of a 20' pole must consist of a 20' Type II-a pole.
5. The lower 5' length of a 25' pole must consist of a 20' Type II-a pole and a 5' Type II-a pole.

ANCHOR BOLTS

1. Each single rod shall be supplied with 2 nuts.
2. Each double rod shall be supplied with 2 nuts.
3. Washers shall be 5/8" x 1 1/2" x 3/16".
4. These washers shall be placed over the nuts and between the nuts.
5. The nuts shall be placed on the side of the pole.

MAST ARMS

1. Luminaires must be installed in accordance with the manufacturer's instructions and specifications.
2. The lower 5' length of a 30' pole must consist of a 30' Type II-a pole.
3. The lower 5' length of a 35' pole must consist of a 30' Type II-a pole and a 5' Type II-a pole.
4. The lower 5' length of a 20' pole must consist of a 20' Type II-a pole.
5. The lower 5' length of a 25' pole must consist of a 20' Type II-a pole and a 5' Type II-a pole.

POLE SPINNING

1. No 10 points of contact shall be made.
2. No 10 points of contact shall be made.

STANDARD

DEPARTMENT OF PUBLIC WORKS
DIVISION OF HIGHWAYS

SCALE: 1/4" = 1'-0"